

PART OF S.W. 1/4
SECTION 16, T.6N., R.2W., S.L.B. & M.

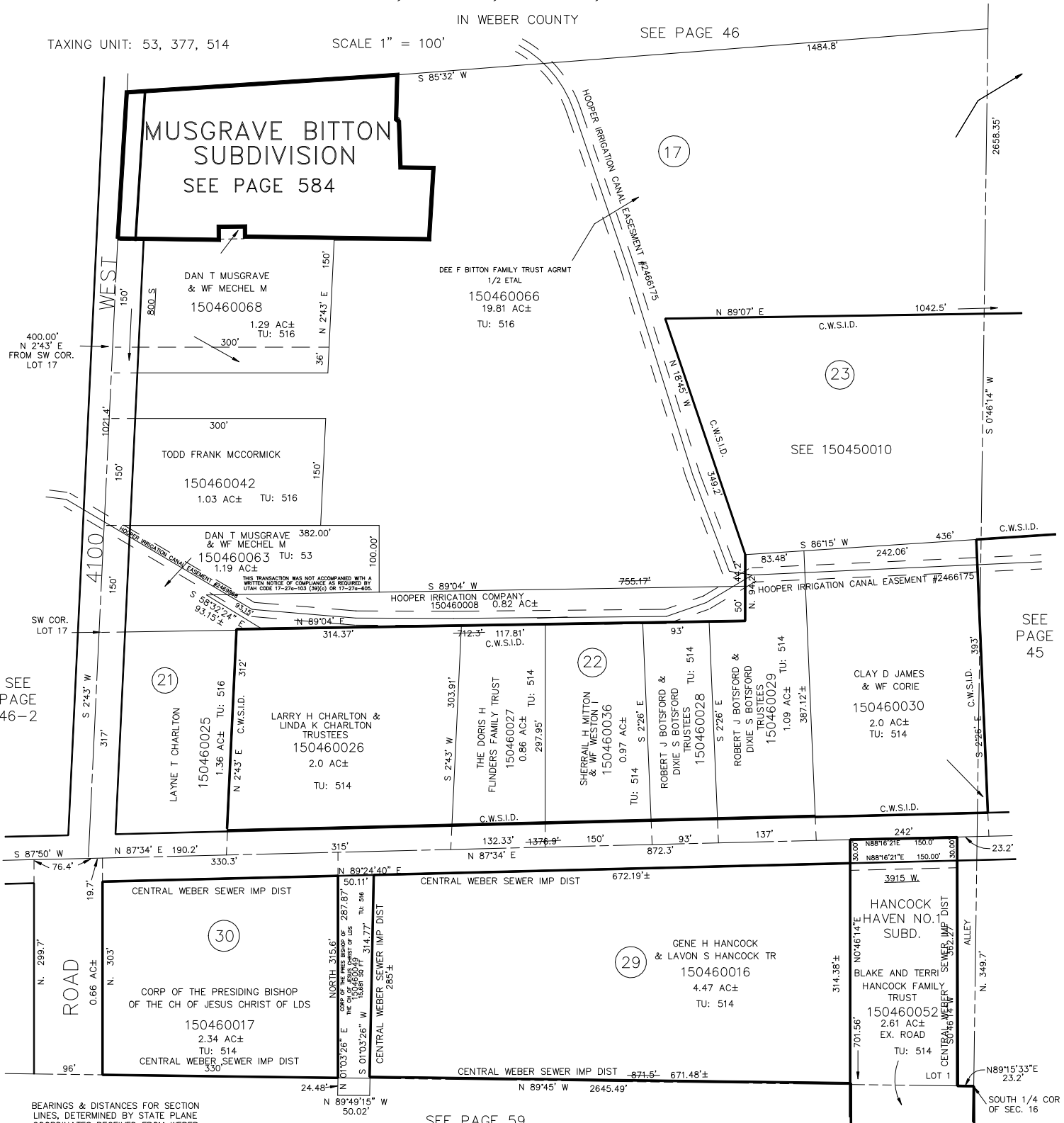
IN WEBER COUNTY

TAXING UNIT: 53, 377, 514

SCALE 1" = 100'

SEE PAGE 46

MUSGRAVE BITTON
SUBDIVISION
SEE PAGE 584



SEE PAGE 46-2

SEE PAGE 45

BEARINGS & DISTANCES FOR SECTION LINES, DETERMINED BY STATE PLANE COORDINATES RECEIVED FROM WEBER COUNTY SURVEYORS OFFICE.

SEE PAGE 59